



Switch accessible Mobile Phone

Software Installation Guide

Important Notes:

1. This manual is a supplement too and should read in conjunction with the ClickToPhone User Manual October 2006.
2. Due to continuous product improvement Unique Perspectives reserves the right to update this Manual. This Manual supersedes all previous issues which must not continue to be used.
3. Any attempt to gain access to or in any way abuse the electronic components of the ClickToPhone renders the manufacturer's warranty void and the Manufacturer free from liability.

Contents

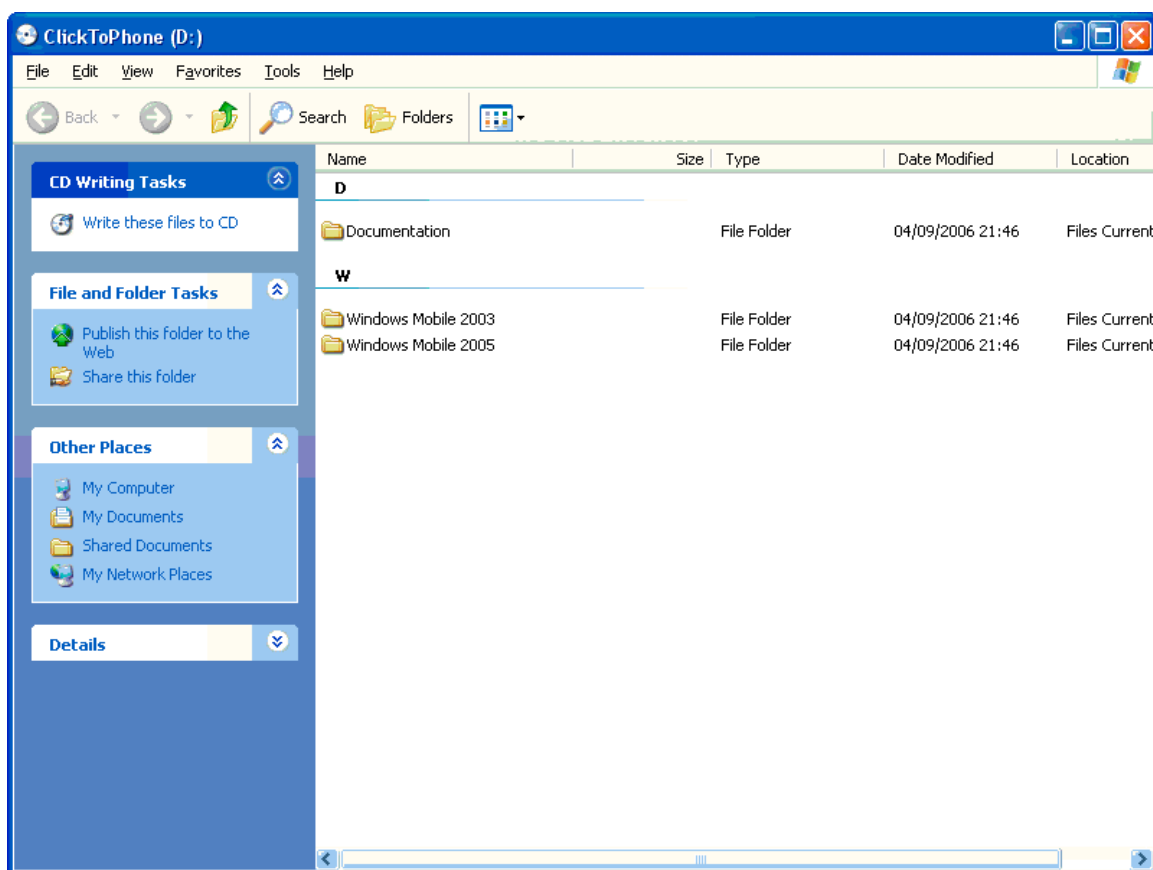
	Page
1. Software Installation	3
Installing the software	3
Setting the Bluetooth ID	9
Editing the settings.xml file	11
Recommended phone settings	12

3 Software Installation

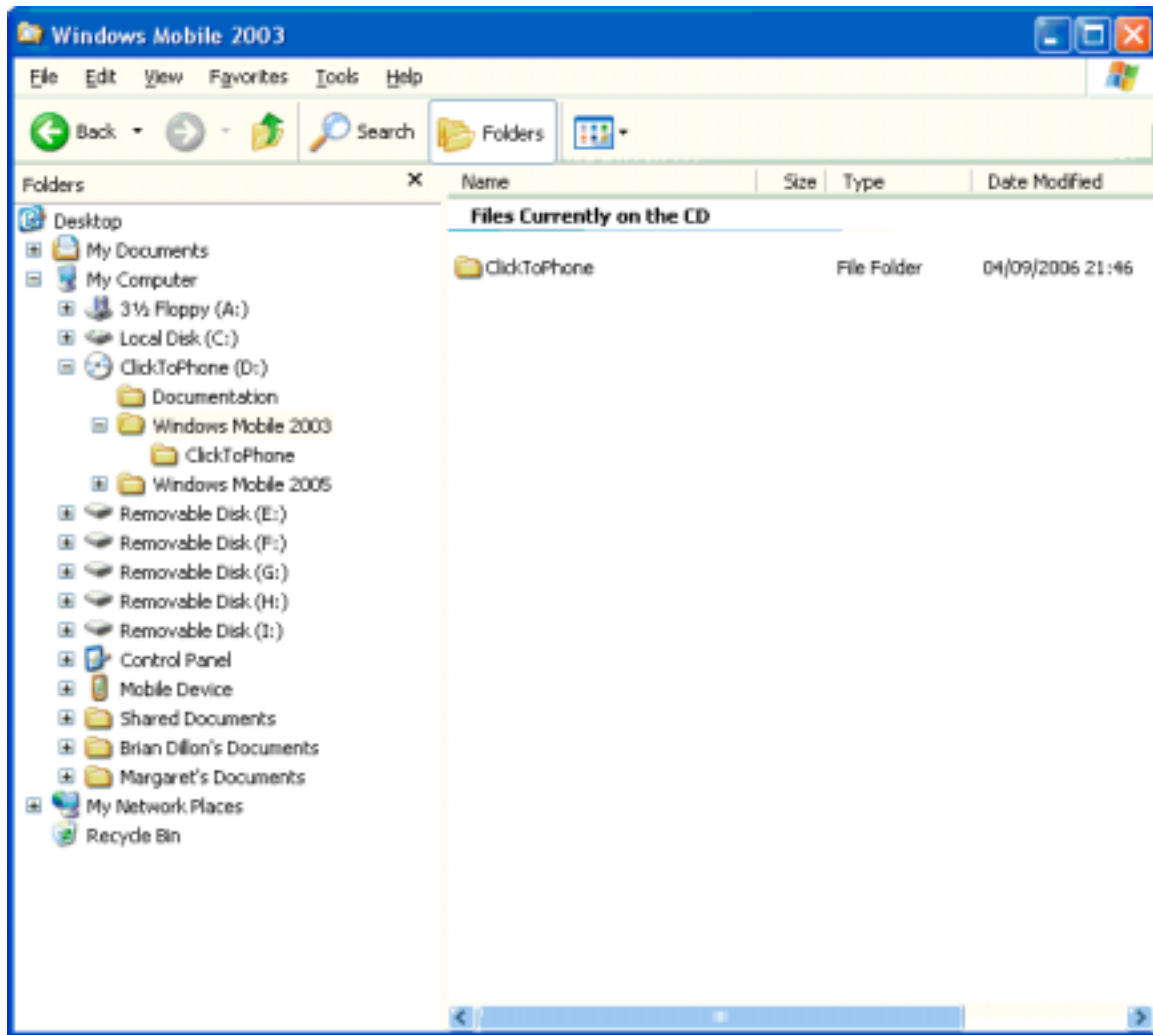
NOTE: This installation procedure assumes familiarity with Windows XP and that the ActiveSync 4.1 software supplied with your mobile phone has been correctly installed and that the phone is connected to the USB port of your computer. This installation involves copying files from the supplied CDROM into the storage area of your mobile phone and requires Microsoft Windows Explorer.

To install the ClickToPhone software

Insert the CDROM into the drive of your computer. After a moment Windows Explorer should automatically launch and display the contents of the CDROM. If it does not, launch Windows Explorer manually and locate the CDROM drive.



Click on the Folders button to display a traditional view of the CD contents.



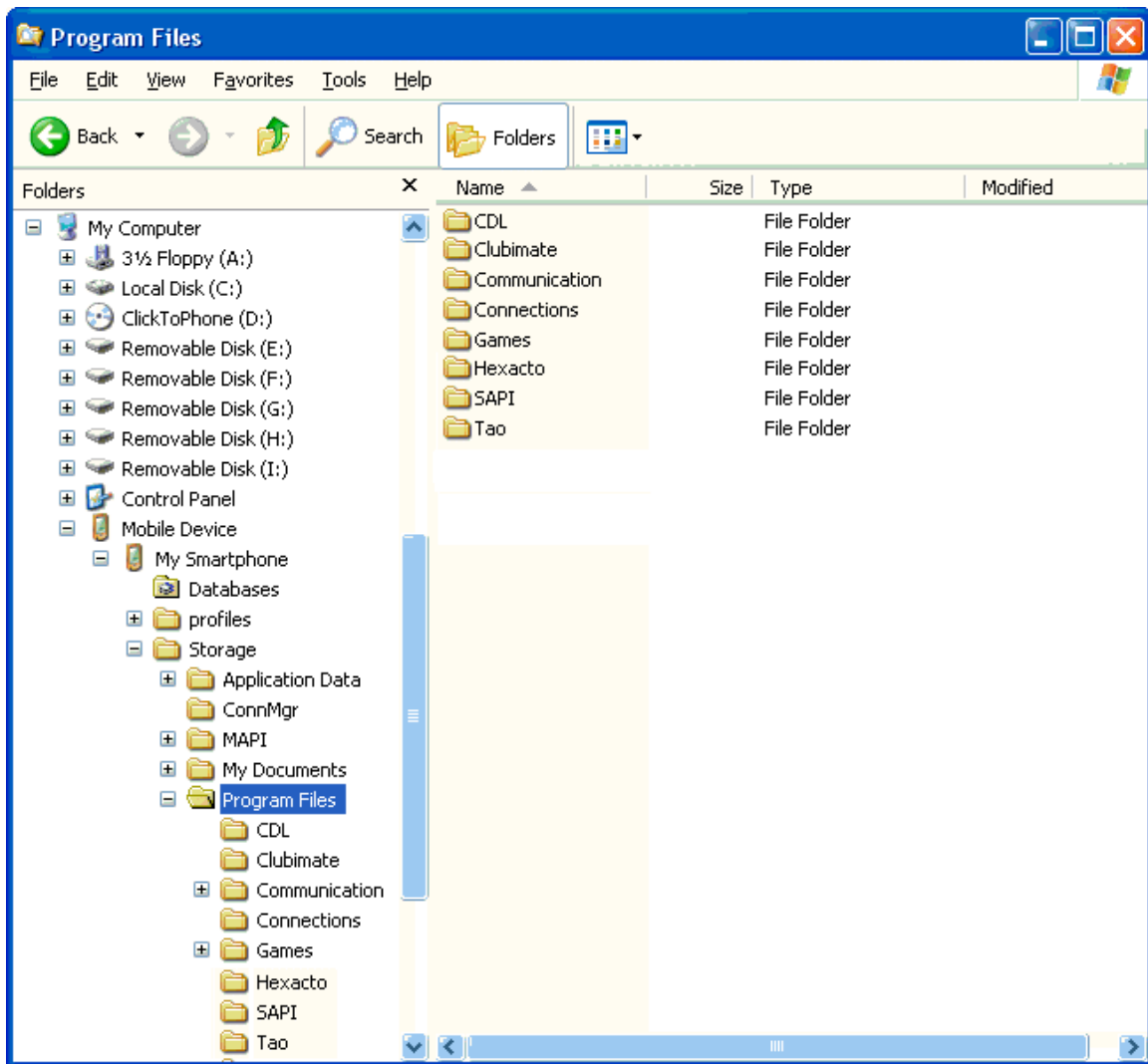
The CD contains three folders titled Windows Mobile 2003, Windows Mobile 2005 and Documentation. Each Windows Mobile folder contains a ClickToPhone folder that contains the ClickToPhone program files. The Documentation folder contains this document in PDF format.

Click on the relevant ClickToPhone folder (depending on whether you are installing onto a Windows Mobile 2003 or Windows Mobile 2005 phone) and choose Copy from the Edit option in the menu bar.

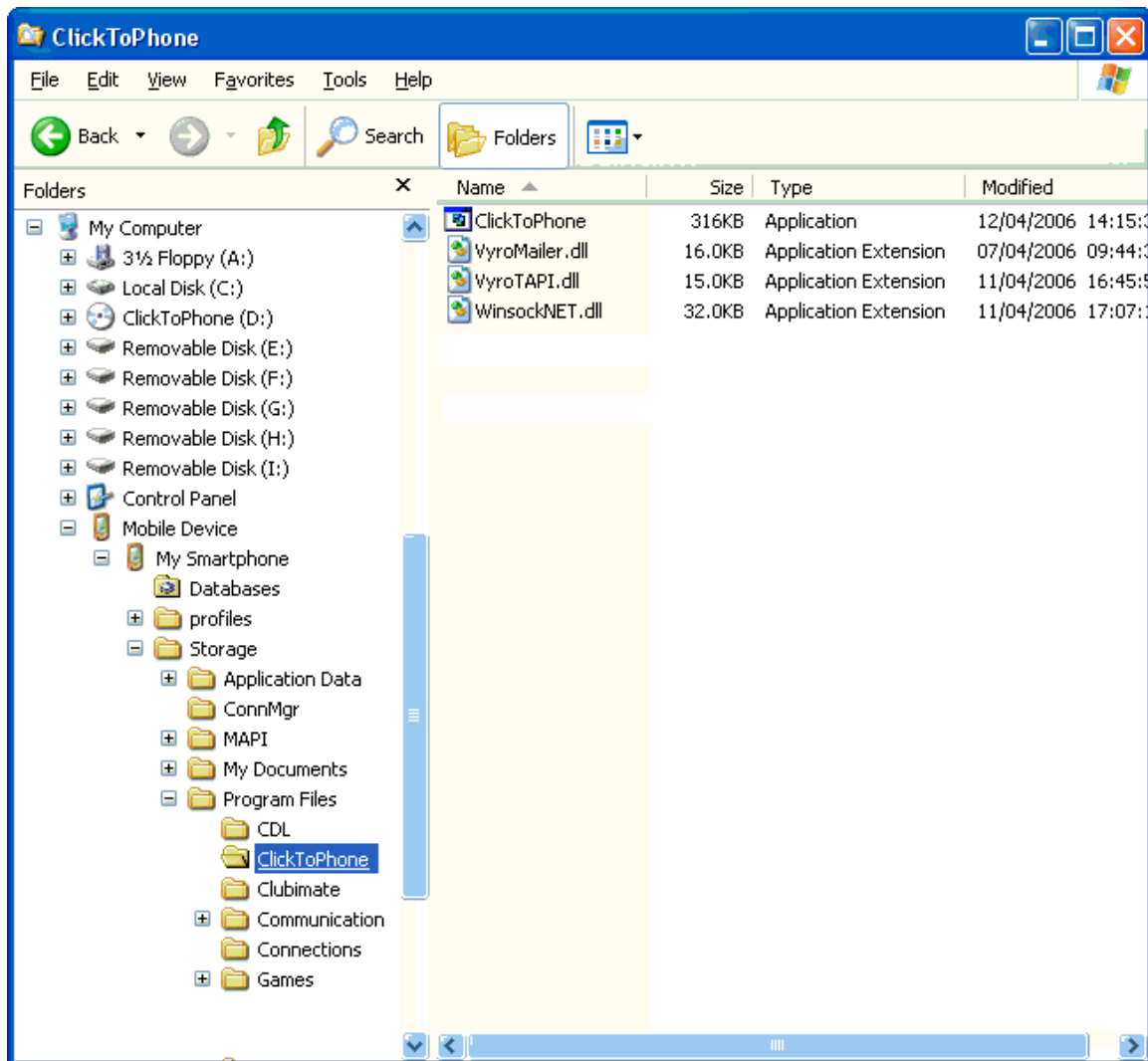
Locate your Mobile Device under My Computer. Locate the Program Files folder.

In Windows Mobile 2003 this is found under Mobile Device-> My Windows Mobile-Based Device->Storage->Program Files.

In Windows Mobile 2005 this is found under Mobile Device->My Windows Mobile-Based Device->Program Files.



Choose Paste from the Edit option in the menu bar. The ClickToPhone folder and its contents are copied into the Program Files folder on your phone.

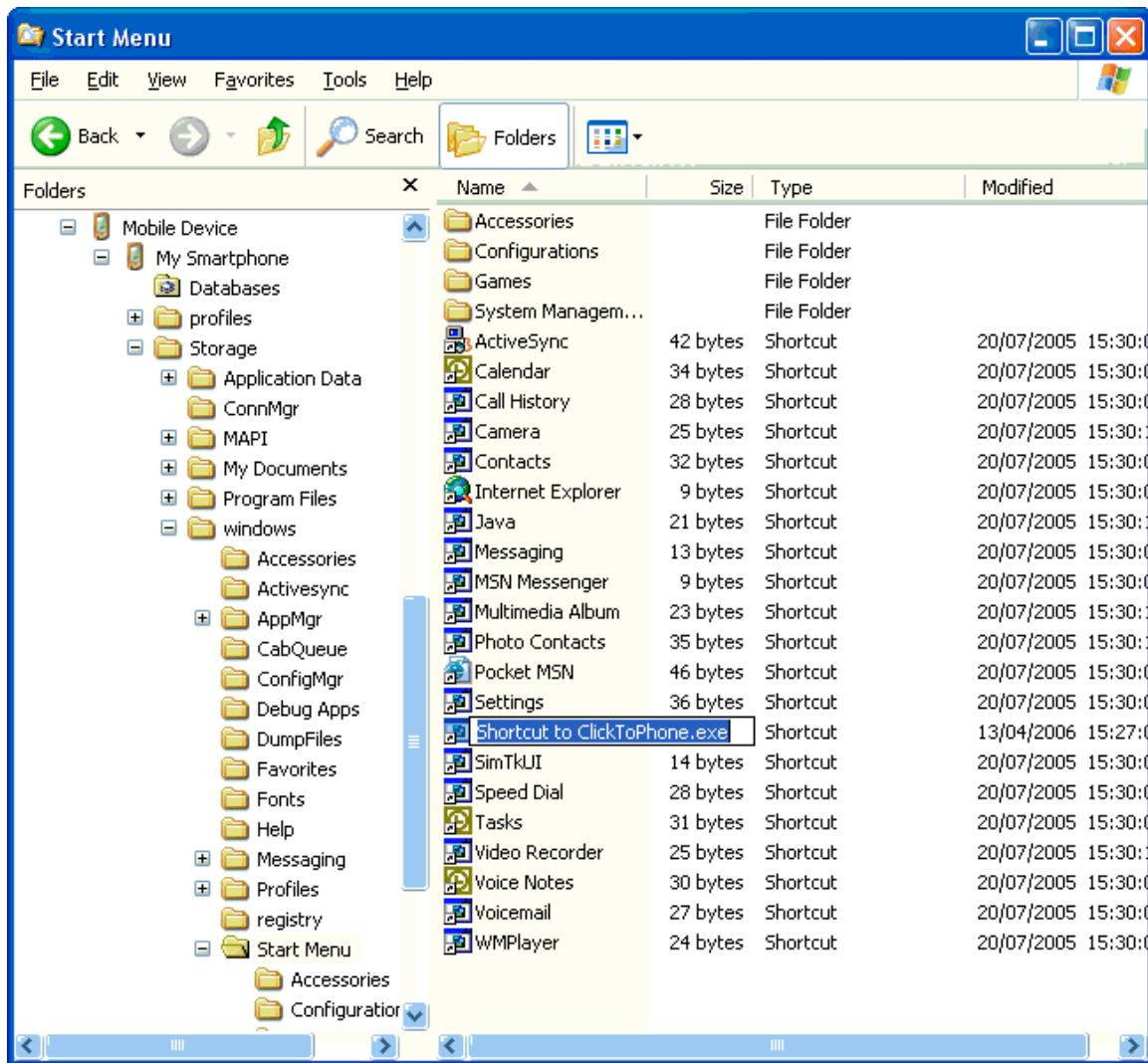


Right click on the ClickToPhone application and choose Copy from the popup menu. Locate the Start Menu folder on your phone.

In Windows Mobile 2003 this is found under Mobile Device->My Windows Mobile-Based Device->Storage->windows->Start Menu.

In Windows Mobile 2005 this is found under Mobile Device->My Windows Mobile-Based Device->windows->Start Menu.

Then choose "Paste Shortcut" from the Edit option in the menu bar (be sure to choose "Paste Shortcut" and not "Paste"). A short cut to the ClickToPhone application is copied into the Start Menu. This means that the ClickToPhone application will be accessible from the mobile phones start menu.



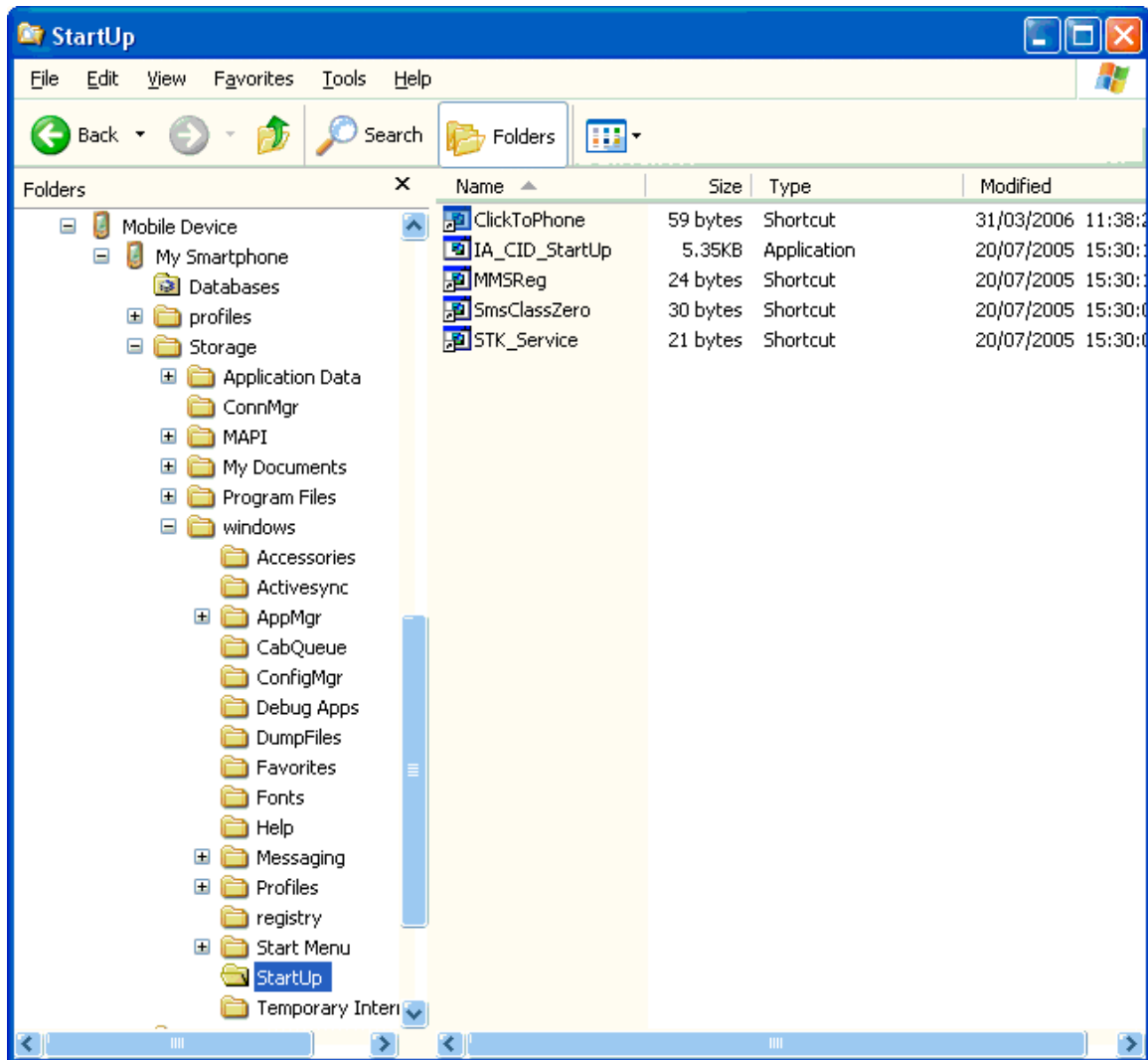
Right click on the shortcut and choose Rename from the popup menu. Rename the shortcut to ClickToPhone or similar.

If you wish the ClickToPhone program to start automatically when the phone is switched on (recommended) then copy the shortcut to the phone's StartUp folder.

In Windows Mobile 2003 this is found under My Smartphone->Storage->windows->StartUp.

In Windows Mobile 2005 this is found under My Windows Mobile-Based Device-> windows->StartUp.

NOTE: When the ClickToPhone program is run for the first time you may be asked a number of times if you wish to run the program and its associated files. Choose Yes in each case.



Finally switch off and on the mobile phone and confirm that the ClickToPhone program appears in the start menu. Launch the program (if it did not do so automatically).



Setting the Bluetooth ID

1. Before you can use the ClickToPhone you must make sure that the bluetooth ID setting in the ClickToPhone program matches that of your hardware. In the case of the ClickToPhone hardware the Bluetooth ID is written on a label which can be found on the inside cover of the battery compartment. In the case of a wheelchair joystick Genie or Genie+ the Bluetooth ID is written on a label which can be found on the inside face of the Infrared panel at the front of the unit (if the joystick is bluetooth equipped).

NOTE: The ClickToPhone software does not use pairing or any other mechanism other than that described below. Do not attempt to make a connection using the phones built-in bluetooth connection software.

2. In the ClickToPhone program choose Bluetooth from the Options menu. The Bluetooth dialog is presented.



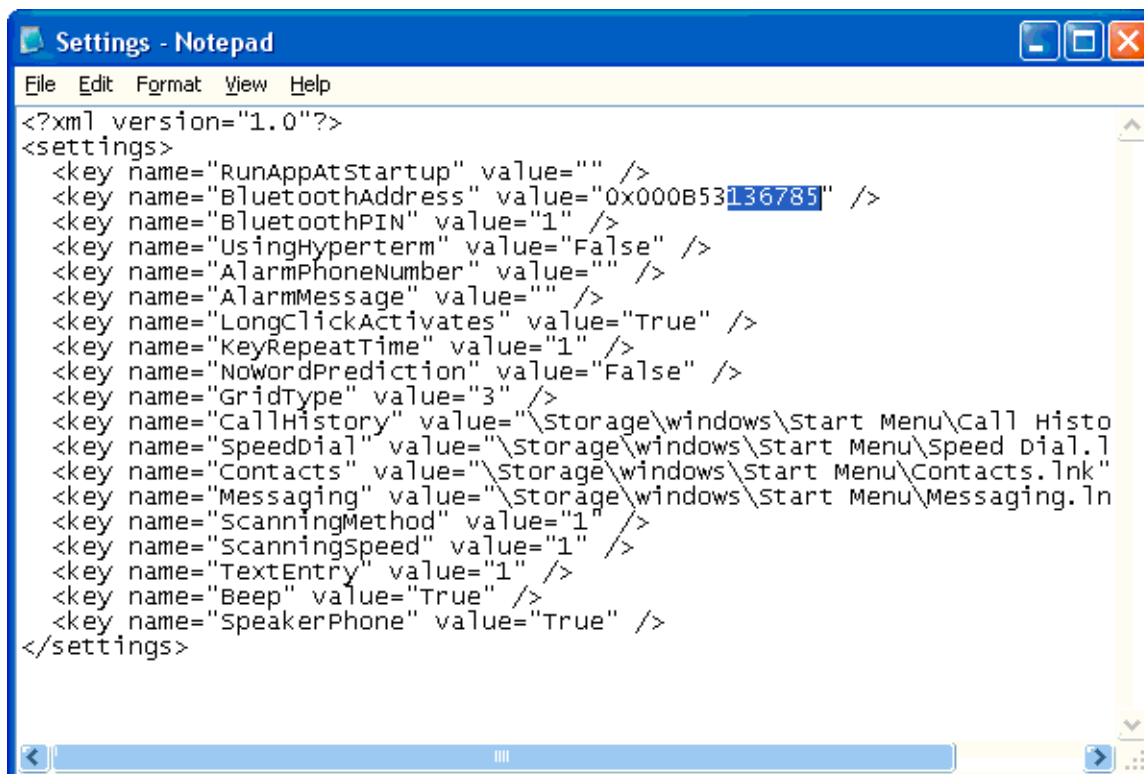
3. Before you can edit the Bluetooth ID you must enter the password "G-BBGC" in the password field.

4. Select the bluetooth module version from the drop down list entitled Version. The version is written on the label in small font above the 6 digit bluetooth ID.
5. Enter the Bluetooth ID into the text box entitled ID.
6. Choose Done.
7. Switch on your ClickToPhone hardware or wheelchair joystick and verify that it connects with the phone. See the section 3.1 of the user manual for more information on connecting.

NOTE: If you wish you can enter the complete 12 digit bluetooth ID by selecting the “unknown” option from the drop down version list and entering the ID preceded by the characters “0x” in the ID text box. For example “0x00019505D91A”.

Editing the settings.xml file

If the file structure on your phone is different from that described on the previous pages you may have to edit the path names of the shortcuts to CallHistory, SpeedDial, Contacts and Messaging so that the ClickToPhone program can run these programs when required. These path names are stored in the settings.xml file. The settings.xml file is created when the ClickToPhone program is run for the first time.



```
Settings - Notepad
File Edit Format View Help
<?xml version="1.0"?>
<settings>
  <key name="RunAppAtStartup" value="" />
  <key name="BluetoothAddress" value="0x000B53136785" />
  <key name="BluetoothPIN" value="1" />
  <key name="UsingHyperterm" value="False" />
  <key name="AlarmPhoneNumber" value="" />
  <key name="AlarmMessage" value="" />
  <key name="LongClickActivates" value="True" />
  <key name="KeyRepeatTime" value="1" />
  <key name="NowordPrediction" value="False" />
  <key name="GridType" value="3" />
  <key name="CallHistory" value="\Storage\windows\Start Menu\Call Histo
  <key name="SpeedDial" value="\Storage\windows\Start Menu\Speed Dial.1
  <key name="Contacts" value="\Storage\windows\Start Menu\Contacts.lnk"
  <key name="Messaging" value="\Storage\windows\Start Menu\Messaging.ln
  <key name="ScanningMethod" value="1" />
  <key name="ScanningSpeed" value="1" />
  <key name="TextEntry" value="1" />
  <key name="Beep" value="True" />
  <key name="SpeakerPhone" value="True" />
</settings>
```

To edit the settings.xml file it is necessary to first copy the file to a temporary location on your hard drive. Then it can be edited in notepad by right clicking on the file and choosing Edit from the popup menu. After you have made the necessary changes choose Save from the File option in the menu bar. Finally copy the edited file back to the ClickToPhone folder on your phone.

If you are in doubt contact technical@click2go.ie

Recommended phone settings

- Keypad control = Click (in Start>Settings>Sounds)
- System font size = Large (in Start>Settings>Accessibility)
- Multipress time out = 2 seconds (in Start>Settings>Accessibility)
- Home screen layout = Large font (in Start>Settings>Homepage)
- Color scheme = Default (in Start>Settings>Homepage)