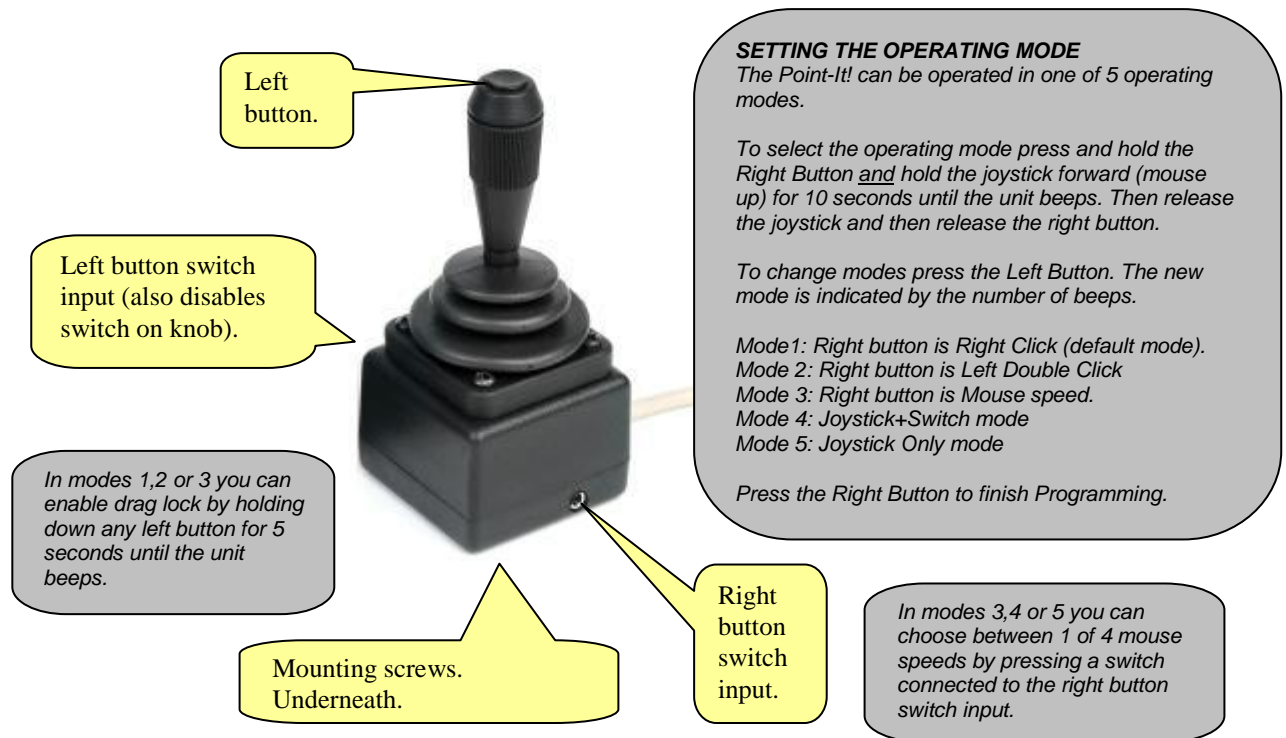


Quick Guide



ADVANCED MODES 4 and 5

In “**Joystick+Switch**” mode pressing the left button begins selection of a mouse button action. Then, rather than moving the mouse pointer, the next movement of the joystick makes a mouse button action. A left movement for left click, a right movement for right click, a forward movement for a double click and a backwards movement for a left drag lock.

In “**Joystick Only**” mode all mouse button actions can be selected without ever pressing a button. For a left click the joystick is “flicked” to the left. For a right click the joystick is “flicked” to the right. For a double click the joystick is “flicked” forward and for a drag lock the joystick is “flicked” backwards.

*The Point-It! manual is supplied in electronic format as PDF or Word format on the enclosed CDROM. **Please read and understand this manual before operating your device.***

Mounting, Knobs and Order Codes

Mounting

The Point-It! *mini* is designed to be mounted on a TASH Mighty Mount or similar. The position of the 2 fixings in its base match those of a TASH buddy button. Therefore, any mounting system designed for a TASH buddy button should be suitable for the Point-It!.

The unit could also be mounted to a desktop or tray but ensure that the mounting screws insert no more than 6mm into the base of the Point-It!



Knob Options

A range of knob alternatives are available for the Point-It! joystick including Chin, Sponge, Carrot, DX, Wrist plate, T-Bar and more.

When you purchase a Point-It! please specify which knob alternative you require and it will be fitted for you by the manufacturer.



ORDER CODES

| | |
|-----------------|--|
| #301-USB-M | Point-It! Mini USB Joystick Standard with Switch |
| #301-BALL-USB-M | Point-It! Mini USB Joystick Ball Knob |
| K-Ca | Carrot Knob |
| K-Q | Dynamic Knob |
| K-Ch | Chin Knob |
| K-Sp | Sponge Knob |
| K-Tbar | T bar |
| K-Wr | Wrist Plate |

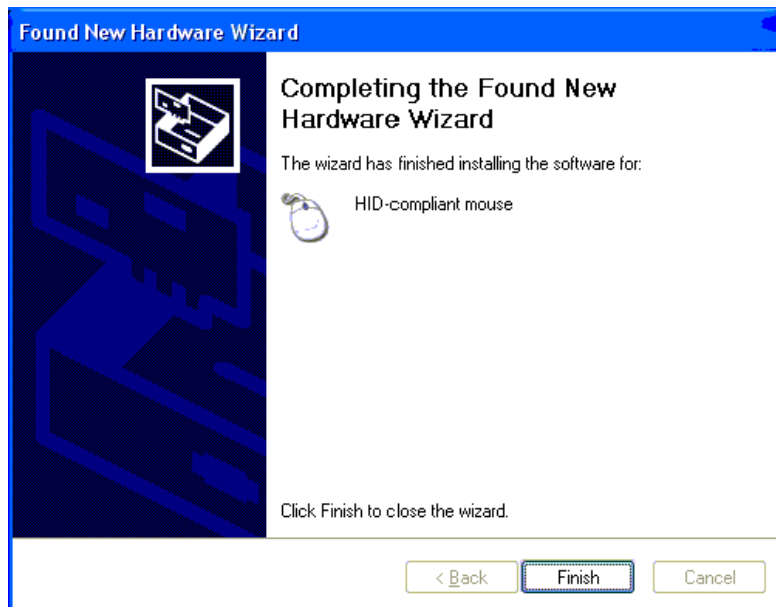
PS2 versions are still available by replacing "USB" with "PS2" in the order code.

Point-It! USB Hardware Installation – Windows XP

Windows will automatically detect when you plug the Point-It joystick into the USB port of your computer. If the Human Interface Device driver necessary to run USB pointing devices is not installed then Windows will run the “Found New Hardware Wizard”



Click on “Install the software automatically” and then click “Next”. Windows will automatically install the Human Interface Device (HID) driver.



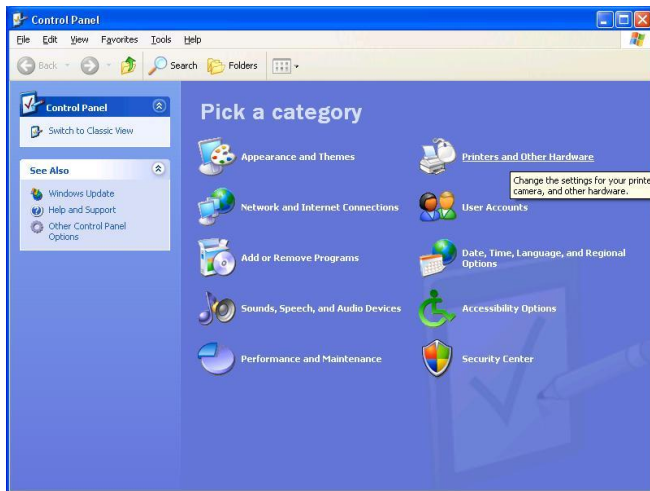
Click “Finish” to finish installing the driver. The Point-It! Joystick is now ready for use.

Point-It! USB Mouse Properties – Windows XP

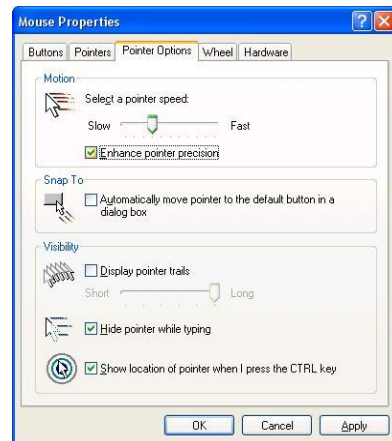
In Windows XP Microsoft have introduced the “Enhance pointer precision” option in Mouse Properties. However, to get the smoothest response from your Point-It! joystick this option should be disabled.

To disable the “Enhance pointer precision” option

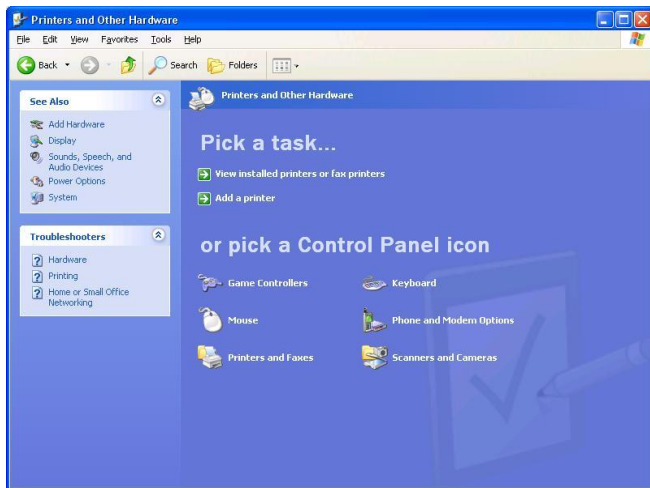
1. From the “Start” menu choose “Control Panel” and then click on “Printers and Other Hardware”.



3. Click on the “Pointer Options” tab.



2. Click on “Mouse”.



4. Click on the “Enhance pointer precision” checkbox to disable this option and then click “OK”.

